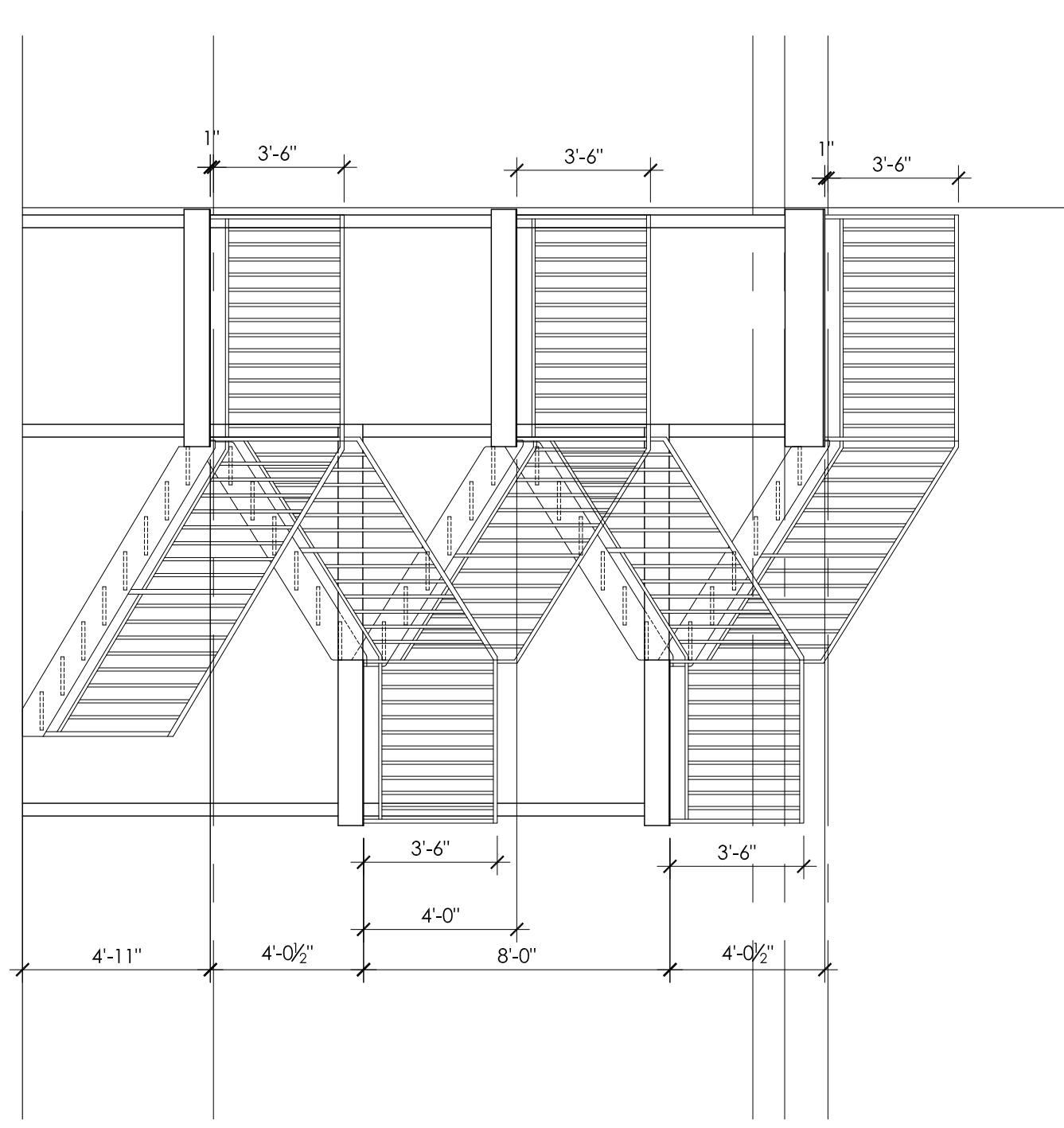
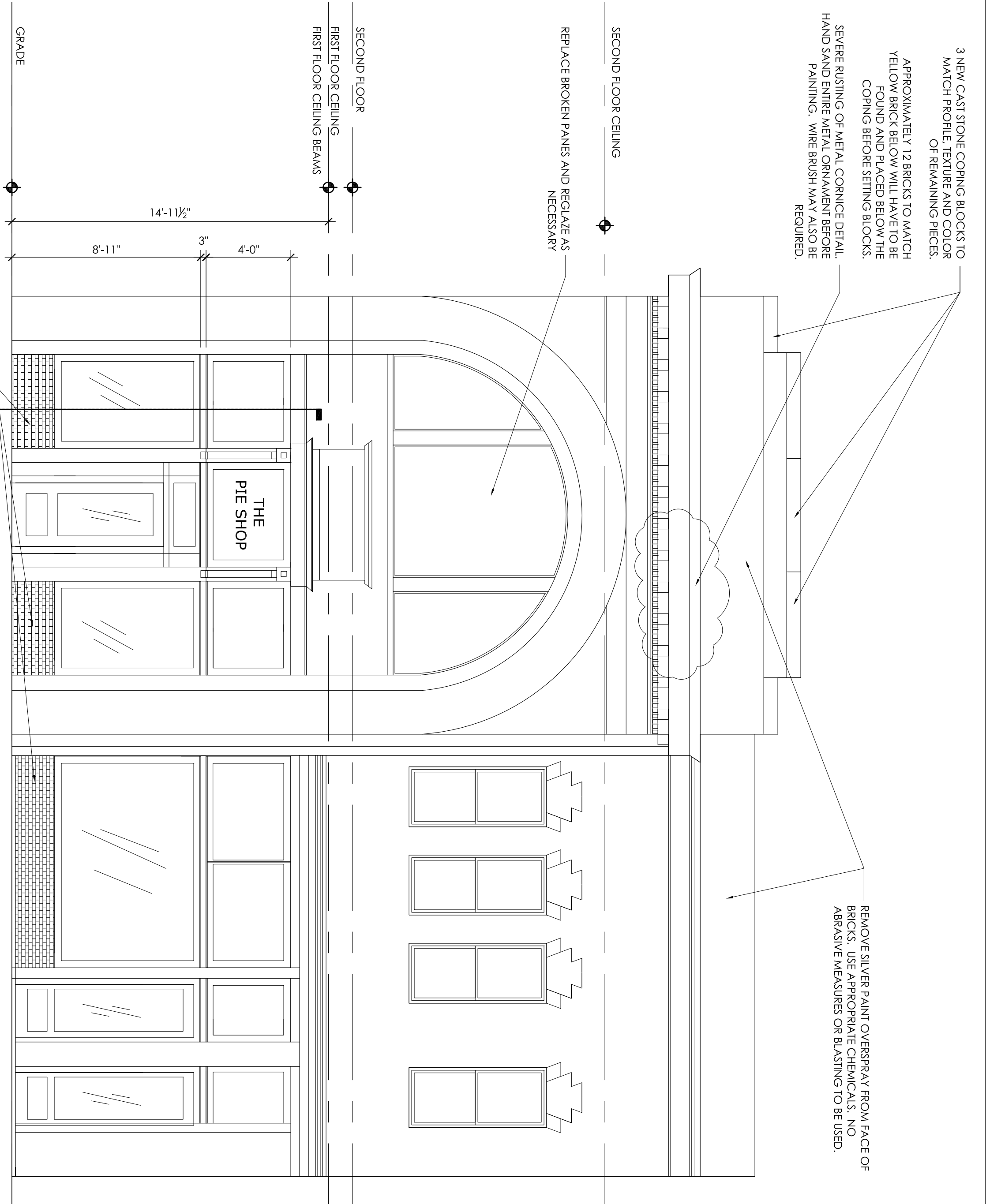


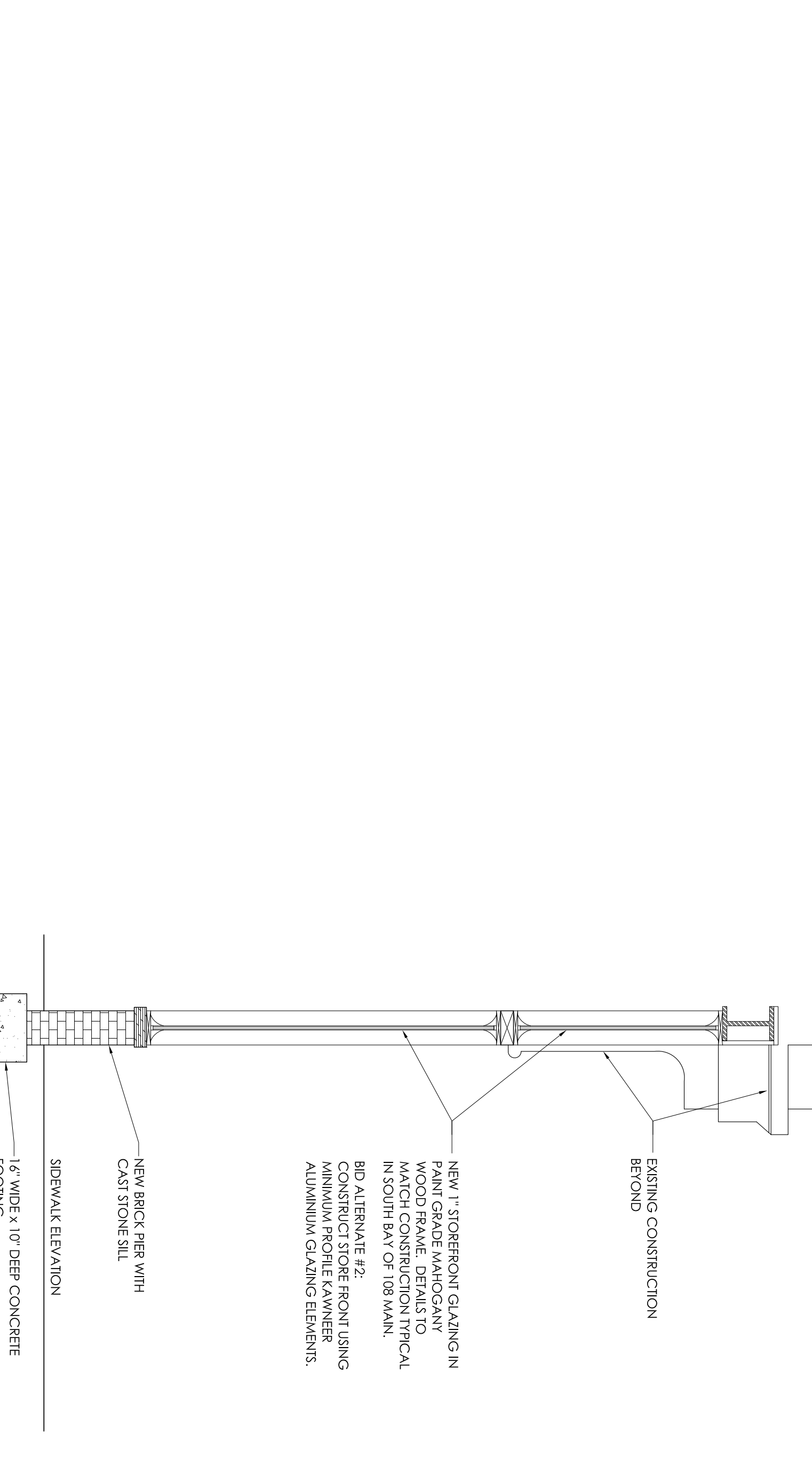
3 REAR ELEVATION
1/4"=1'-0"



4 STAIR TOWER SIDE ELEVATION
1/4"=1'-0"



1 FRONT ELEVATION
1/4"=1'-0"



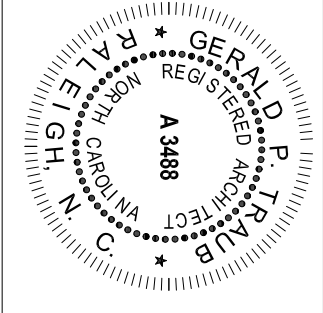
2 STOREROOM SECTION
1/2"=1'-0"

GENERAL NOTES:
 1. WORK SHOWN ON FRONT SHALL BE SELECTIVELY DEMOLISHED, TAKING CARE TO SALVAGE ALL ORIGINAL MATERIAL. WHEN EVIDENCE OF PREVIOUS CONFIGURATION IS FOUND, ADVISE ARCHITECT BEFORE DEMOLITION.
 2. UPPER FLOOR AND FACADE SHALL BE CONTINUOUSLY SHORED DURING ALL DEMOLITION AND RECONSTRUCTION WORK.

3 NEW CAST STONE COPING BLOCKS TO MATCH ORIGINAL SETBACK AND COLOR OF REMAINING PIECES.
 APPROXIMATELY 12 BRICKS TO MATCH YELLOW BRICK BELOW WILL HAVE TO BE FOUND AND PLACED BELOW THE COPING BEFORE SETTING BLOCKS.
 SEVERE RUSTING OF METAL CORNICE DETAIL. HAND SAND ENTIRE METAL ORNAMENT BEFORE PAINTING. WIRE BRUSH MAY ALSO BE REQUIRED.

REMOVE SILVER PAINT OVERSPRAY FROM FACE OF ABRASIVE MEASURES OR BLASTING TO BE USED.

TRAUB ARCHITECTURE + DESIGN, INC.
 328A West Morgan Street
 Raleigh, NC 27601
 919.829.1291
 919.829.1292 Fax



GENERAL NOTES:

REVISIONS

NO.	DATE	DESCRIPTION

DATE: 1/04/10
 DRAWN BY: DOC
 PROJECT NO.: 2008-09

SHEET TITLE: ELEVATIONS & SECTION

SHEET: A2-1

Warrenton Pie Shop
 108&110 S. Main Street
 WARRENTON, NC

TRAUB ARCHITECTURE + DESIGN, INC.

PROJECT # 2008-09