

**Addendum #2 7-30-21**

O' Berry Neuro-Medical Treatment Center ELC-2 Window Replacement  
SCO: # 20-22826-01A

**Schedule:**

Subcontractor walk-thru: July 26, 2021 @ 10:00.

Questions to designer: July 30, 2021

Addendum: August 2, 2021

Bids to DHHS: August 5, 2021 @ 3:00

Make the following changes to the Drawings and Specifications.

**Drawings:**

1. A2.0: Substitute Details 07 & 04 with Details 07 & 04 on Sheet 1
  - a. Provide treated blocking and aluminum trim at the sill.
  - b. Grout solid the channel in the concrete sill.
2. A2.1: Substitute Details 01 & 02 with Details 01 & 02 on Sheet 2
  - a. Provide treated blocking and aluminum trim at the sill
  - b. Grout solid the channel in the concrete sill
3. A1.3: Title bubble 01
  - a. Omit 'ALTERNATE A-1' of description
4. A1.4: Title bubble 01
  - a. Omit 'ALTERNATE A-2' of description.
5. A2.0: Detail 03 Window type B
  - a. Add the following door hardware schedule (Basis of Design: YKK AP America)
    - i. Hardware shall be by storefront manufacture except the Auto Closure specified in 08 4229 Automatic Entrance
    - ii. Single outswing
    - iii. Continuous Hinge P-26103
    - iv. Mortis Adam Rite Series 4510 Deadlatch
    - v. Cylinder and core- institutional function – Keyed to owner's lock system
    - vi. 4" Saddle Threshold with thermal break
    - vii. Door Sweep
    - viii. Integrated weather stripping.
    - ix. Push Bar 1"
    - x. Adams Rite 4560 Lever Handle

**Specifications:**

6. Supplementary General Conditions: Add the following to USE OF SITE :
  - a. "Keys will be issued to the contractor for access to the buildings. There is a \$250.00 fee if keys are lost."
  - b. " Contractors shall be aware that COVID- 19 restrictions are fluid and can change during the project. A new policy will be in effect on September 30, 2021. No Contractor will be allowed on the O' Berry Campus unless they are fully vaccinated for COVID-19. Proof of vaccination may be required.

## Questions , Answers & Clarifications

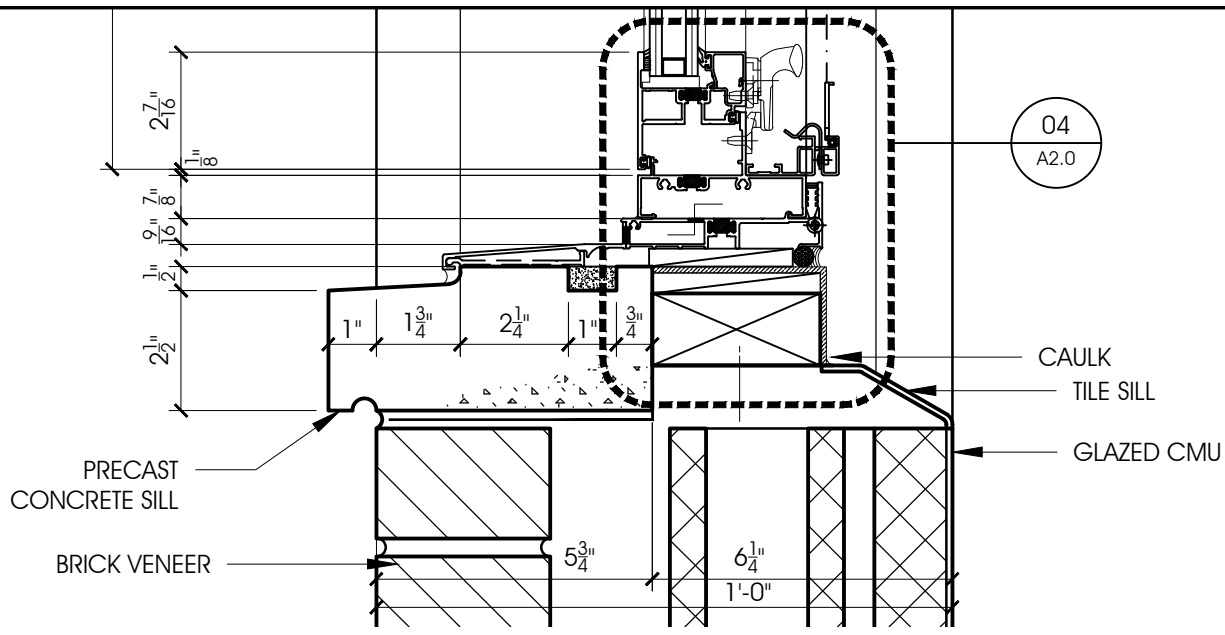
1. Who is responsible for permit costs? **Permits are not required for State work.**
2. Is delegated design required for anything? Do not see it mentioned in the specs. **Please see Section 01 4000 Quality Requirements; 1.03 C.**
3. Are the new windows and storefront meant to be an exact 1 for 1 swap that won't need additional work to increase or decrease the existing openings? **The design intent is for the windows to be swapped out with minor finish jamb, head, or sill work.**
4. Is there any masonry, concrete, or metalwork to be done to prepare the openings for the window replacement? **The windows have a sliding sub-frame to make minor adjustments so the opening will not have to be modified.**
5. Type "D" Windows all seem to be closed off with an interior wall behind each window. Are these windows meant to have blinds? If so, should a single blind be installed on each side of the window (2 blinds for each "D" window)? Or should it be a large blind that covers both windows on the window "D"? **The floor plan shows a wall, but it is a chase wall below the window sill. Window D does not require blinds. The surface 2 of the insulated glass unit is to be translucent.**
6. Please specify which window types are to receive blinds.
  - a. Window Type: A, A-L, A-R - 2 blinds
  - b. Window Type: B – 1 blind
  - c. Window Type: C, C-L, C-R – 2 blinds
  - d. Window Type: D – no blinds
  - e. Window Type: E – 1 blind
  - f. Window Type: F-S – no blinds
7. If the windows are side by side, for example, window-type A, is only the operable windows to receive blinds? Or should a large blind be installed to cover both windows? **See #6 above.**
8. Sheet A1.3 notes FLOOR PLAN – ALTERNATE A-1 and sheet A1.4 notes FLOOR PLAN – ALTERNATE A-2. The project manual and the window legend on the drawings state there is only Alternate 1 and that is shown in the hatched areas on the drawings. Please explain the Alternate A-1 and A-2 floor plans shown on these sheets. **ALTERNATE A-1 and ALTERNATE A-2 are not part of the contract documents. See Addendum items above. There is only one Alternate G-1.**
9. Is there a structural sheet showing the wind loading information or can the PSF be provided? **Please see #2 above.**
10. One of the subcontractors wants to submit EFCO as a substitution for the Aluminum Storefronts and Aluminum Windows Spec Sections. Please confirm if this is acceptable. **EFCO is acceptable if it can meet the design intent of the drawings and specifications.**
11. Addendum 1 notes there will be approximately 7 days between phases to move patients from each wing. Are these 7 days counted as business days or calendar days? **The 7 days is calendar days. This is an estimate.**
12. Please clarify the painting scope. **The design intent is for the opening jambs, head, and sill to be painted for a clean and finished surface.**
13. Addendum 1 notes the Alternate 1 work to be the living and dining areas. The project manual states the alternate work is in the Den, Activity Room, and Dining for Buildings 2.1, 2.2, 2.3, and 2.4. Additionally, all of building 2.0 is alternate 1 work. Please confirm these are the alternate 1 areas of work and nothing has changed. **Alternate G-1 has not changed. It is shown best on Sheet A1.0. The windows in the cross-hatched rooms are in the alternate. Building 2.0 is included.**

14. Is there a specific timeline the owner has to follow in terms of the start date for construction, end date, etc? **The completion date is 180 days from the Notice to Proceed.**
15. With material lead times being up and down these days, is the owner willing to work around long lead times that the windows and storefront could possibly carry? The owner understands the issue with lead times on materials. **The contract allows adjustment to the contract time for “any causes beyond the Contractor’s control”. The request must be made in writing, within 10 days following the cause for the delay. Please see Supplementary General Conditions – Time of Completion.**

End of Addendum

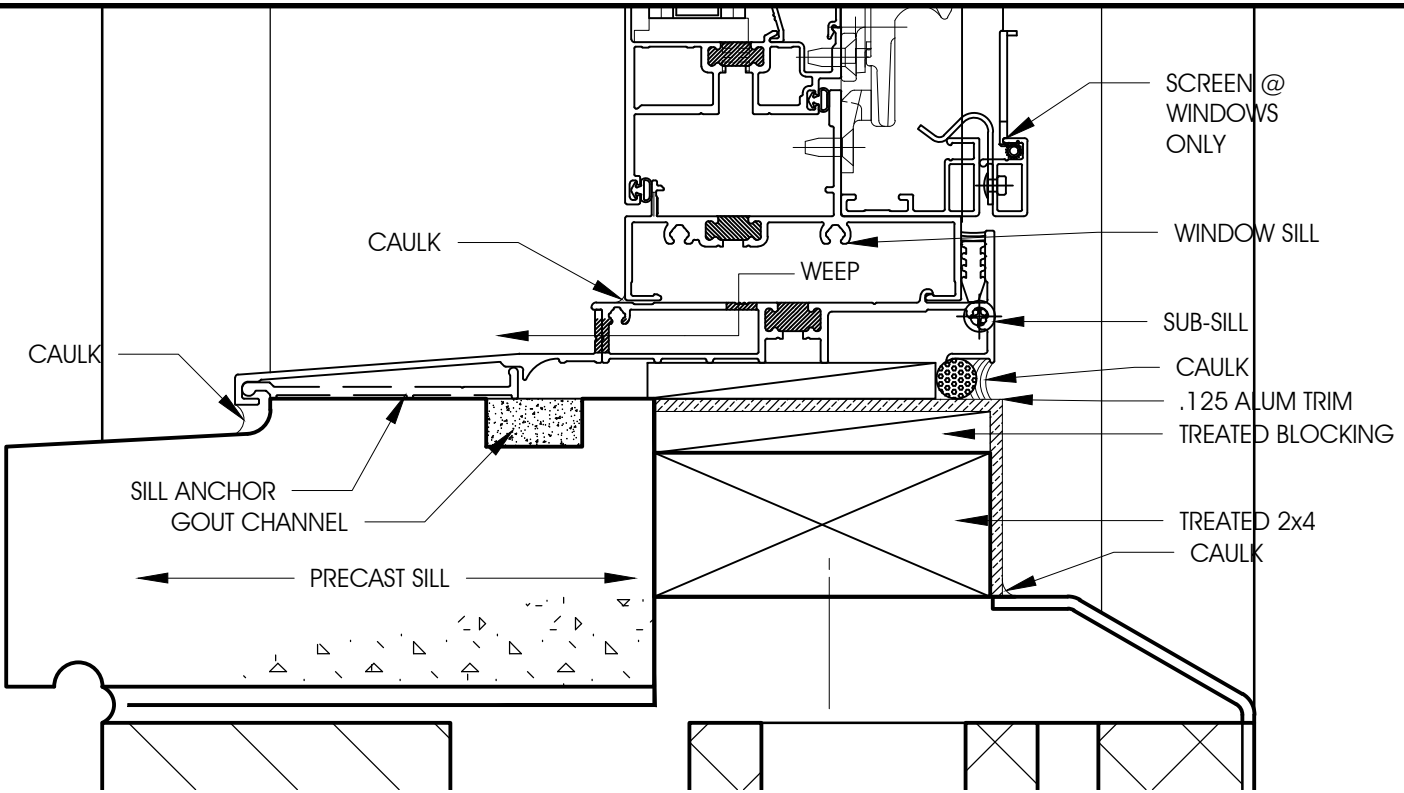
DeVon Tolson  
DeVon Tolson Architecture, Inc.





**J - SILL**

**07 DETAIL - FIXED OVER / PROJECT OUT**  
3" = 1'-0"



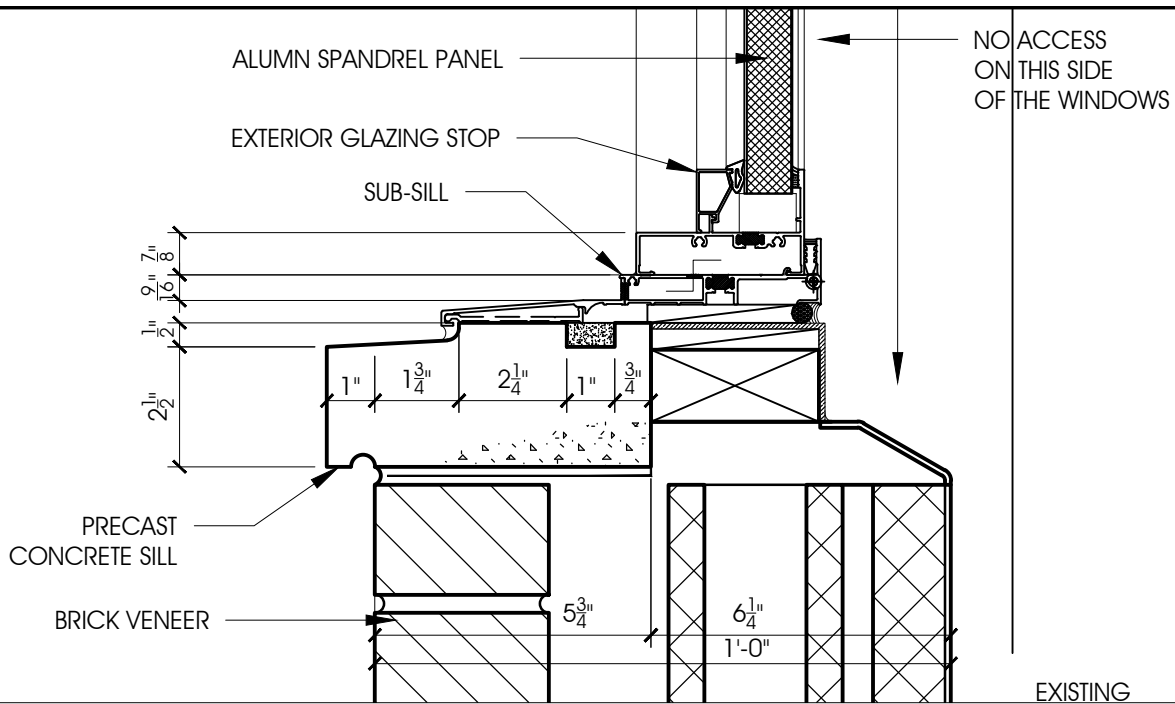
**04 SILL DETAIL**  
6" = 1'-0"

O' BERRY NEURO-MEDICAL TREATMENT CENTER  
ELC-2 WINDOW REPLACEMENT  
SCO: #20-22826-01A

ADDENDUM #2

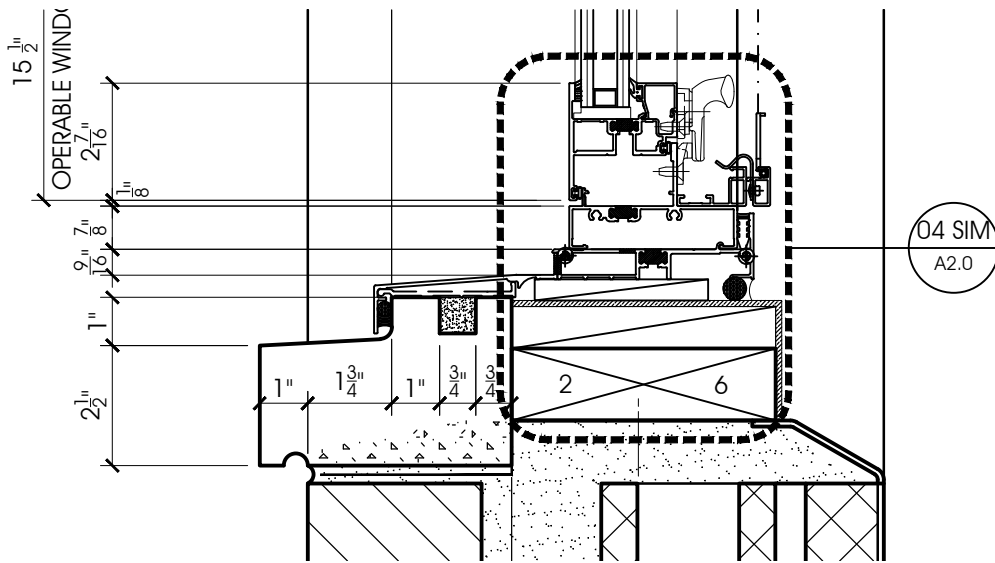
ADD-02 SHEET 1

DeVon Tolson Inc  
**Architecture**  
4008 Barrett Drive, Suite 203  
Raleigh, NC 27609  
Phone 919-788-0003  
Fax 919-788-1119  
deman@mindspring.com



**T - SILL**

**02 WALL SECTION - SPANDREL GALZING**  
3" = 1'-0"



**P - SILL**

**01 WALL SECTION**  
3" = 1'-0"

O' BERRY NEURO-MEDICAL TREATMENT CENTER  
ELC-2 WINDOW REPLACEMENT  
SCO: #20-22826-01A

ADDENDUM #2

ADD-02 SHEET 2

DeVon Tolson  
**Architecture** Inc

4008 Barrett Drive, Suite 203  
Raleigh, NC 27609  
Phone 919-788-0003  
Fax 919-788-1119  
deman@mindspring.com